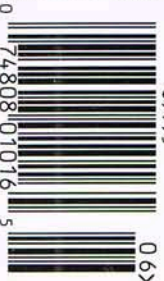


INTERIOR DESIGN[®]

the
many
faces of
creativity

NUMBER 8 2012



\$9.95

06



firms: **enrique concha & co.** and **sociedad de profesionales kovacic y cía.**
site: **puerto bories, chile**

Next Stop, Antarctica

hospitality

The Fjord of Last Hope

doesn't sound like an ideal spot for honeymooners. But the shore of the Fjordo de Última Esperanza, in the Chilean town of Puerto Bories near the Parque Nacional

Torres del Paine, is indeed the location of the Singular Patagonia luxury hotel by Enrique Concha & Co. and the Sociedad de Profesionales Kovacic y Cía. The two firms have certainly brought ➤

From top: Andean peaks rise behind the Singular Patagonia hotel's 100 acres. Its 3,000-square-foot spa faces the Fjordo de Última Esperanza.





Clockwise from top left: The dock once welcomed steamships from as far away as Europe. LED fixtures illuminate guest corridors paneled in steel. Bathrooms have radiant-heated cement-tiled floors. Oak from railroad ties and carts, found on-site, clads the freestanding spa. Furnishings in a guest room evoke the property's British heritage. The spa features an indoor-outdoor swimming pool.

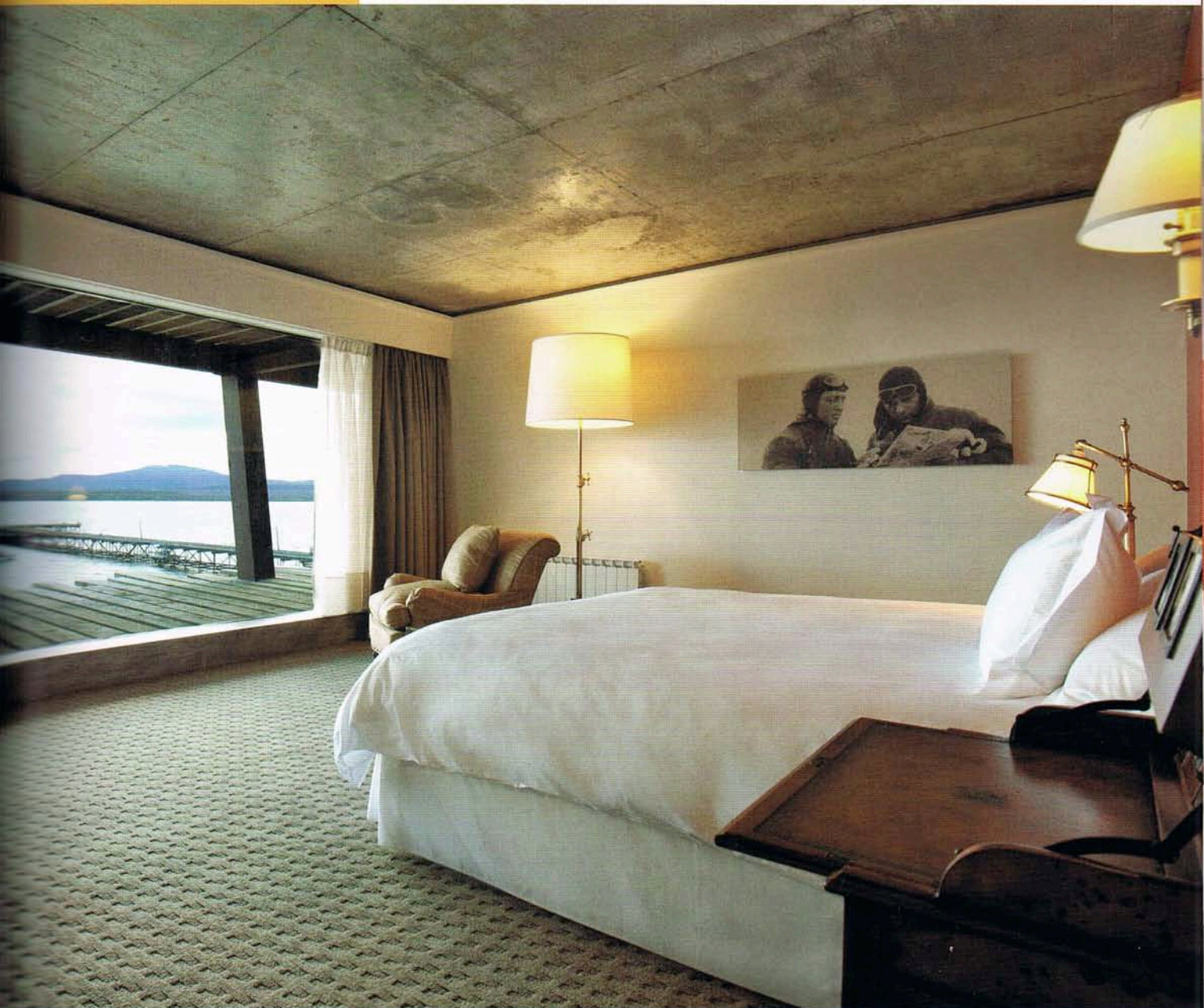


eco-consciousness and sleekness to what was once a meat-packing and wool-processing plant, constructed by the British in 1915.

Its 54 guest rooms and three suites now offer majestic views of the fjord and the snow-capped Andes. "The challenge was to add function areas to an industrial building," Pedro Kovacic says. He deployed glass and steel to pay homage to the past while ushering in contemporary comforts.

Everything possible was restored—a key to the project's LEED certification—and salvaged lumber found new purposes. Case in point: Guest corridors' window walls are protected by an outer lattice-work built from wood originally used to dry sheepskins.

For the interior, Enrique Concha mixed the estancia aesthetic with British references. "The massive furniture conquers the spaces," he says. "Meanwhile, all the materials are simple and cost-efficient. ➤





hospitality

There's no excess. No superfluous elements."

Instead, the impact comes from the natural surroundings. "Luxury," he adds, "is the view through each floor-to-ceiling window." Capping the amenities are a double-height restaurant and a spa with an indoor-outdoor heated swimming pool. There's also a museum that pays tribute to the history of the region and the significance of the plant, declared a national monument.

—Jim Shi

Clockwise from top: The restaurant's cement-topped communal table, leather-covered stools, and bronze pendant fixtures are all custom. Stairs connect the restaurant to private dining above. In the spa, a couple's treatment room has its own whirlpool. Chaise longues line the indoor portion of the pool. A steam pipe in the engine room is part of the hotel's museum.



FROM FRONT THROUGH COMERCIAL DUGMO: TUB, TILE (BATHROOM). DELINEARE: CHAISES (SPA). THROUGHOUT AQUA HOSPITALITY CARPETS: CUSTOM CARPET. SHERWIN-WILLIAMS COMPANY: PAINT. RUBEN AMSEL: LIGHTING CONSULTANT. GATICA JIMÉNEZ INGENIEROS Y CIA.: MEP. SALFACORP: GENERAL CONTRACTOR.

