

A CONVENIENT GATEWAY TO DISCOVER THE WETLANDS WONDERS



PUERTO VALLE
HOTEL DE ESTEROS



HOTEL DE ESTEROS

The Iberá Natural Reserve is one of the largest fresh water reservoirs on the continent, and the largest protected area in Argentina. It has an area of 1.3 million hectares, and hosts four species declared "Natural Heritage of Corrientes Province": the neotropical otter, the maned wolf, the Pampas deer and the marshland deer. It is also home to the two caiman species of Argentina: the yacaré caiman and the broad-snouted caiman. Its ornithological variety is evidenced by more than 350 bird species.

Puerto Valle is nestled in the northeastern corner of the reserve, and has become an extremely convenient gateway to discover its wonders. Its exclusive location provides private access to the Wetlands, and its proximity to the Iguazú Falls makes a visit to the falls an ideal journey to combine with the Wetlands.

The Hotel stands on the Paraná River bank, and on the verge of the swamps, so every activity on the estate is related to the River, the Estancia and the Wetlands.

DISTANCES



ITUZAINGÓ	25 km
POSADAS AIRPORT (PSS)	55 km
RUINAS DE SAN IGNACIO	110 km
CORRIENTES	260 km
PUERTO IGUAZÚ	350 km

LOCATION

Puerto Valle is located in the so-called Mesopotamian region of Argentina, more precisely, in Ituzaingó, Corrientes Province.

It is a privileged location, as it is only 55 km from the Posadas Airport (PSS) and 355 km from Puerto Iguazú International Airport (IGR), with convenient flight connections both in Argentina and Brazil.

Though there are no flights between Puerto Iguazú and Posadas, there is a road that connects both cities. Visitors can take a private car service to go to the San Ignacio Mini Jesuit Mission Ruins*, which are half-way between both points.

(*) Declared World Heritage Site by UNESCO

LATITUDE -27° 36"
LONGITUDE -56° 25"

WEATHER

Ideal temperature all year round

For their natural features and geographic location, the Iberá Wetlands have pleasant temperatures all year round.

While the weather is moderate all year round, with a mean temperature of 20° C, spring is the ideal season to visit the area, with low temperatures around 15° C and high temperatures about 28° C. The rainy seasons are the fall and the summer, with generally very humid and hot weather, while the driest season is the winter, with low temperatures at night, and pleasant temperatures at midday and in the afternoon.

No matter what season you choose to travel to the Esteros, it is recommendable to take sunscreen, sunglasses, a windbreaker jacket, waterproof shoes and mosquito repellent.





IN THE ESTANCIA

- The Tree Nursery
- Monkey Trail
- Horseback riding, free use of bicycles and access to the swimming pool.



IN THE RIVER

- Boat trip in the Paraná River
- Kayaking



IN THE WETLANDS

- Discovering Esteros del Iberá, tour to Laguna Valle

ROOMS

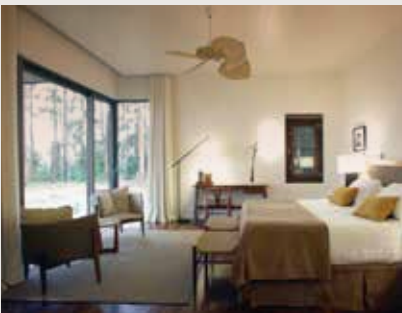


CASCO

Quantity 5

Setting Twin or king-size beds

Size from 35 m2



DELUXE

Quantity 8

Setting Twin or king-size beds

Size from 45 m2

Extras Admits one extra bed

All rooms have view of the river.



RESTAURANT

The proposal from the chef and his staff goes back to the simplicity and character of the place, highlighting typical local ingredients such as river fish and tropical and citrus fruits, which have been part of local recipes since time immemorial.

Using contemporary techniques, the menu offers a choice of aromas and flavors perfectly matched with a select wine menu, on which diners will find some of the best labels from Argentina.

COMMON SPACES

Infused with the true character of the colonial-style Estancia, common spaces by the riverside, on the park or in the house, lend the hotel its identity and uniqueness.

The **PARK** surrounding the manor house has an area of more than 14 hectares. In it, a large number of native and exotic species live in harmony. With its woven cane veranda and old trees, the park enhances the natural beauty of the river.



In full complicity, an **ORGANIC GARDEN** plays a leading role next to the historical manor house. In the garden, herbs and vegetables are grown, which are then used as ingredients for the restaurant's gourmet dishes.

Leaving the garden, on the other side of the park there is a **POOL**, a **PALAPA** and a **QUINCHO**—a place for peaceful retreat on warm summer days. The deck chairs tempt guests to bask in the sun, while the shade and a soft breeze enfold the armchairs under the straw roof of the palapa.

Inside the hotel, other areas invite guests to relax and enjoy: the old manor kitchen was fully recycled into a **LIBRARY**—a meeting point with a fireplace and a bookcase: the ideal setting to spend the winter afternoons.

The **DRAWING-ROOM** has the right ambiance to round up the Puerto Valle experience: the refined gastronomic experience and the unspoiled views afforded by its large windows and balconies are the perfect combination to fill our memories with unique moments and flavors.